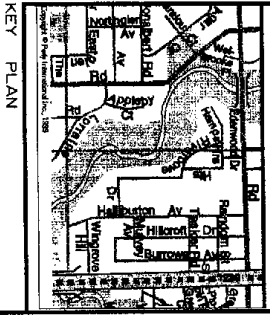


1720 Random Building
 17 207 443 BLD.00
 14-AUG-2017
 SUNDIA NAJAL 14-AUG-2017

NOTE: DIMENSIONS TO BE DISCREPANCIES ON SPREADSHEETS

BURROWS AVENUE
 (by Registered Plan 3274)
 P.L.N. 07460 - 0394



SURVEY NOTE
 LOT BOUNDARIES SHOWN HEREIN ARE AS SHOWN ON A PLAN OF SURVEY PREPARED BY CUBS SURVEY GROUP INC. O.L.S., JAMES J. BIRCH, P.E., 2017.

ELEVATION NOTE
 ELEVATIONS SHOWN HEREIN WERE OBTAINED FROM A FIELD SURVEY CONDUCTED IN THE CITY OF TORONTO UNDER P.L.N. 07460 - 0394. HIGHER A FINISHED ELEVATION OF 185.00 METER.

LEGEND
 SPREAD FINISH
 TOP/BOTTOM OF CURB
 TOP/BOTTOM OF DRIVE
 OVERHEAD UTILITIES CABLES
 WATER MAIN
 GAS MAIN
 CONCRETE BLOCK CURB
 CONCRETE BLOCK & BRICK
 CONCRETE BLOCK RETAINING WALL
 TOP / BOTTOM OF WALL
 SMALL
 ENTRANCE
 HIGH POINT

CERTIFICATE
 I HAVE SURVEYED THE LAND FOR THE CONSTRUCTION OF A 2 STOREY DWELLING LOCATED AT THE CORNER OF BURROWS AVENUE AND RANDOM STREET. THIS PLAN IS REGISTERED IN THE OFFICE OF THE REGISTRAR OF LANDS AND SURVEYS, ON BEHALF OF THE CITY OF TORONTO. THE EXISTING BOUNDARY PATTERNS OF ADJACENT PROPERTIES ARE SHOWN WITH THE

July 6th 2017
 [Signature]
 CHIEF ENGINEER AND SURVEYOR

LOT GRADING PLAN	
OF	
LOT 24	
REGISTERED PLAN 3274	
6 RANDOM STREET	
CITY OF TORONTO	
(FORMERLY THE CITY OF ENDSWORTH)	
METRIC	
DISTANCES SHOWN ON THIS PLAN SHALL BE DIVIDED BY 0.3048	
AND CAN BE CONVERTED TO METERS BY DIVIDING BY 0.3048	
THIS PLAN IS PROTECTED BY COPYRIGHT	
LAND SURVEY GROUP ONTARIO LAND SURVEYORS 1770 SHEPPARD AVENUE EAST TORONTO, ONTARIO M2N 1K9 TEL: 416-223-2321 FAX: 416-497-8221 WWW.LANDSURVEYGROUP.COM	
SCALE: 1:180	DATE: JUNE 20TH, 2017
DRAWN BY: E.C.	PLAN N°: L55-3664-A

RECEIVED 28/JUL/2017

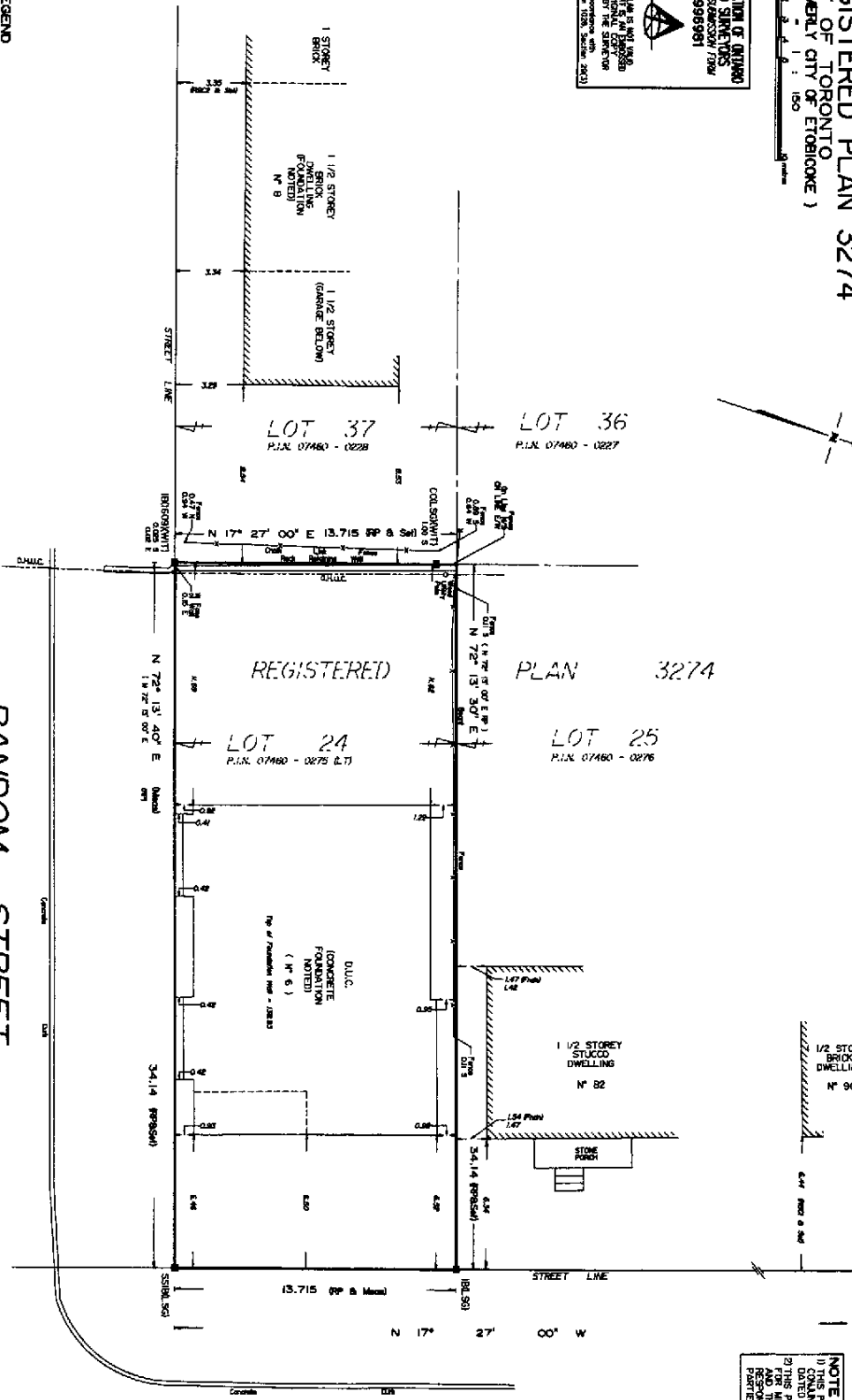
LOT 24

REGISTERED PLAN 3274
(FORMERLY CITY OF TORONTO)
(FORMERLY CITY OF ETOBICOKE)

SCALE 1" = 150'

ASSOCIATION OF ONTARIO
LAND SURVEYORS
PLAN 3280800789
19989961

THIS PLAN IS NOT VALID
UNLESS IT IS APPROVED
AND REGISTERED BY THE SURVEYOR
IN ACCORDANCE WITH SECTION 20(3)
OF THE SURVEY ACT



RANDOM STREET
(formerly Robert Street by Registered Plan 3274)
P.L.N. 07460 - 0275

BURROWS AVENUE
(by Registered Plan 3274)
P.L.N. 07460 - 0294

LEGEND

□	DEMONTS	MONUMENT PLANTED
■	WITNESSES	WITNESSES FOUND
○	WIT	WITNESSES FOUND
○	CC	OUT CROSS
○	B	IRON BAR
○	SSIB	SHORT STANDARD IRON BAR
○	RP	REGISTERED PLAN 3274
○	RS01	PLAN 8 FIELD NOTES BY R. S. COPE, O.L.S.
○	RS02	PLAN 8 FIELD NOTES BY R. S. COPE, O.L.S.
○	RS03	PLAN 8 FIELD NOTES BY R. S. COPE, O.L.S.
○	RS04	PLAN 8 FIELD NOTES BY R. S. COPE, O.L.S.
○	RS05	PLAN 8 FIELD NOTES BY R. S. COPE, O.L.S.
○	RS06	PLAN 8 FIELD NOTES BY R. S. COPE, O.L.S.
○	RS07	PLAN 8 FIELD NOTES BY R. S. COPE, O.L.S.
○	RS08	PLAN 8 FIELD NOTES BY R. S. COPE, O.L.S.
○	RS09	PLAN 8 FIELD NOTES BY R. S. COPE, O.L.S.
○	RS10	PLAN 8 FIELD NOTES BY R. S. COPE, O.L.S.
○	RS11	PLAN 8 FIELD NOTES BY R. S. COPE, O.L.S.
○	RS12	PLAN 8 FIELD NOTES BY R. S. COPE, O.L.S.
○	RS13	PLAN 8 FIELD NOTES BY R. S. COPE, O.L.S.
○	RS14	PLAN 8 FIELD NOTES BY R. S. COPE, O.L.S.
○	RS15	PLAN 8 FIELD NOTES BY R. S. COPE, O.L.S.
○	RS16	PLAN 8 FIELD NOTES BY R. S. COPE, O.L.S.
○	RS17	PLAN 8 FIELD NOTES BY R. S. COPE, O.L.S.
○	RS18	PLAN 8 FIELD NOTES BY R. S. COPE, O.L.S.
○	RS19	PLAN 8 FIELD NOTES BY R. S. COPE, O.L.S.
○	RS20	PLAN 8 FIELD NOTES BY R. S. COPE, O.L.S.
○	RS21	PLAN 8 FIELD NOTES BY R. S. COPE, O.L.S.
○	RS22	PLAN 8 FIELD NOTES BY R. S. COPE, O.L.S.
○	RS23	PLAN 8 FIELD NOTES BY R. S. COPE, O.L.S.
○	RS24	PLAN 8 FIELD NOTES BY R. S. COPE, O.L.S.
○	RS25	PLAN 8 FIELD NOTES BY R. S. COPE, O.L.S.
○	RS26	PLAN 8 FIELD NOTES BY R. S. COPE, O.L.S.
○	RS27	PLAN 8 FIELD NOTES BY R. S. COPE, O.L.S.
○	RS28	PLAN 8 FIELD NOTES BY R. S. COPE, O.L.S.
○	RS29	PLAN 8 FIELD NOTES BY R. S. COPE, O.L.S.
○	RS30	PLAN 8 FIELD NOTES BY R. S. COPE, O.L.S.
○	RS31	PLAN 8 FIELD NOTES BY R. S. COPE, O.L.S.
○	RS32	PLAN 8 FIELD NOTES BY R. S. COPE, O.L.S.
○	RS33	PLAN 8 FIELD NOTES BY R. S. COPE, O.L.S.
○	RS34	PLAN 8 FIELD NOTES BY R. S. COPE, O.L.S.
○	RS35	PLAN 8 FIELD NOTES BY R. S. COPE, O.L.S.
○	RS36	PLAN 8 FIELD NOTES BY R. S. COPE, O.L.S.
○	RS37	PLAN 8 FIELD NOTES BY R. S. COPE, O.L.S.
○	RS38	PLAN 8 FIELD NOTES BY R. S. COPE, O.L.S.
○	RS39	PLAN 8 FIELD NOTES BY R. S. COPE, O.L.S.
○	RS40	PLAN 8 FIELD NOTES BY R. S. COPE, O.L.S.
○	RS41	PLAN 8 FIELD NOTES BY R. S. COPE, O.L.S.
○	RS42	PLAN 8 FIELD NOTES BY R. S. COPE, O.L.S.
○	RS43	PLAN 8 FIELD NOTES BY R. S. COPE, O.L.S.
○	RS44	PLAN 8 FIELD NOTES BY R. S. COPE, O.L.S.
○	RS45	PLAN 8 FIELD NOTES BY R. S. COPE, O.L.S.
○	RS46	PLAN 8 FIELD NOTES BY R. S. COPE, O.L.S.
○	RS47	PLAN 8 FIELD NOTES BY R. S. COPE, O.L.S.
○	RS48	PLAN 8 FIELD NOTES BY R. S. COPE, O.L.S.
○	RS49	PLAN 8 FIELD NOTES BY R. S. COPE, O.L.S.
○	RS50	PLAN 8 FIELD NOTES BY R. S. COPE, O.L.S.

COPYRIGHT © Land Survey Group Inc. 2017
NO PERSON, FIRM, COMPANY, CORPORATION, OR
OTHER PARTY IN WHOLE OR IN PART
SHALL BE HELD LIABLE FOR ANY DAMAGE
SUFFERED BY ANY PERSON OR ENTITY
WHICH RESULTS FROM THE USE OF THIS
PLAN OR THE INFORMATION CONTAINED
HEREIN.

BEARING NOTE
BEARINGS ARE ASTROGNOMIC AND ARE REFERRED
TO THE WESTERN LIMIT OF BURROWS AVENUE
HAVING A BEARING OF N 72° 13' 30" E
AS SHOWN ON REGISTERED PLAN 3274.

SURVEYOR'S CERTIFICATE

- I CERTIFY THAT:
1. THIS SURVEY AND PLAN ARE CORRECT AND IN ACCORDANCE WITH THE SURVEY ACT AND THE REGULATIONS MADE UNDER THEREOF.
 2. THE SURVEY WAS COMPLETED ON JANUARY 5TH, 2017.
 3. THE PLAN UPDATES TO SHOW DWELLING UNDER CONSTRUCTION FROM FIELD MEASUREMENTS PERFORMED ON SEPTEMBER 28TH, 2017.

DATE: January 5, 2017
DAVID J. HAYWARD
ONLINE SURVEYOR

ELEVATION NOTE

ELEVATIONS SHOWN HEREON ARE GEODETIC AND IN METRES AND ARE RELATED TO CITY OF TORONTO MEAN SEA LEVEL. ELEVATION OF BURROWS AVENUE AT 43 AND METERS (EAD 858087-9788).

NOTE
1) THIS PLAN MUST BE READ IN CONJUNCTION WITH THE REPORT DATED OCTOBER 14TH, 2017 FOR MORE DETAILED INFORMATION. THE SURVEYOR'S LIABILITY FOR USE BY OTHER PARTIES.

METRIC
DISTANCES SHOWN HEREON ARE IN METRES AND CAN BE CONVERTED TO FEET BY DIVIDING BY 0.3048

ISG LAND SURVEY GROUP
ONTARIO LAND SURVEYORS
177 THE GIBBERNWAY, UNIT 1, TORONTO, ONTARIO M6H 1M9
TEL: (416) 221-0200 FAX: (416) 221-0100 WWW.LANDSURVEYGROUP.COM
DRAWN I.E. CHENYAKHIN CHECKED BY T.D.H. PLAN NO. 150-2064-0

AS BUILT